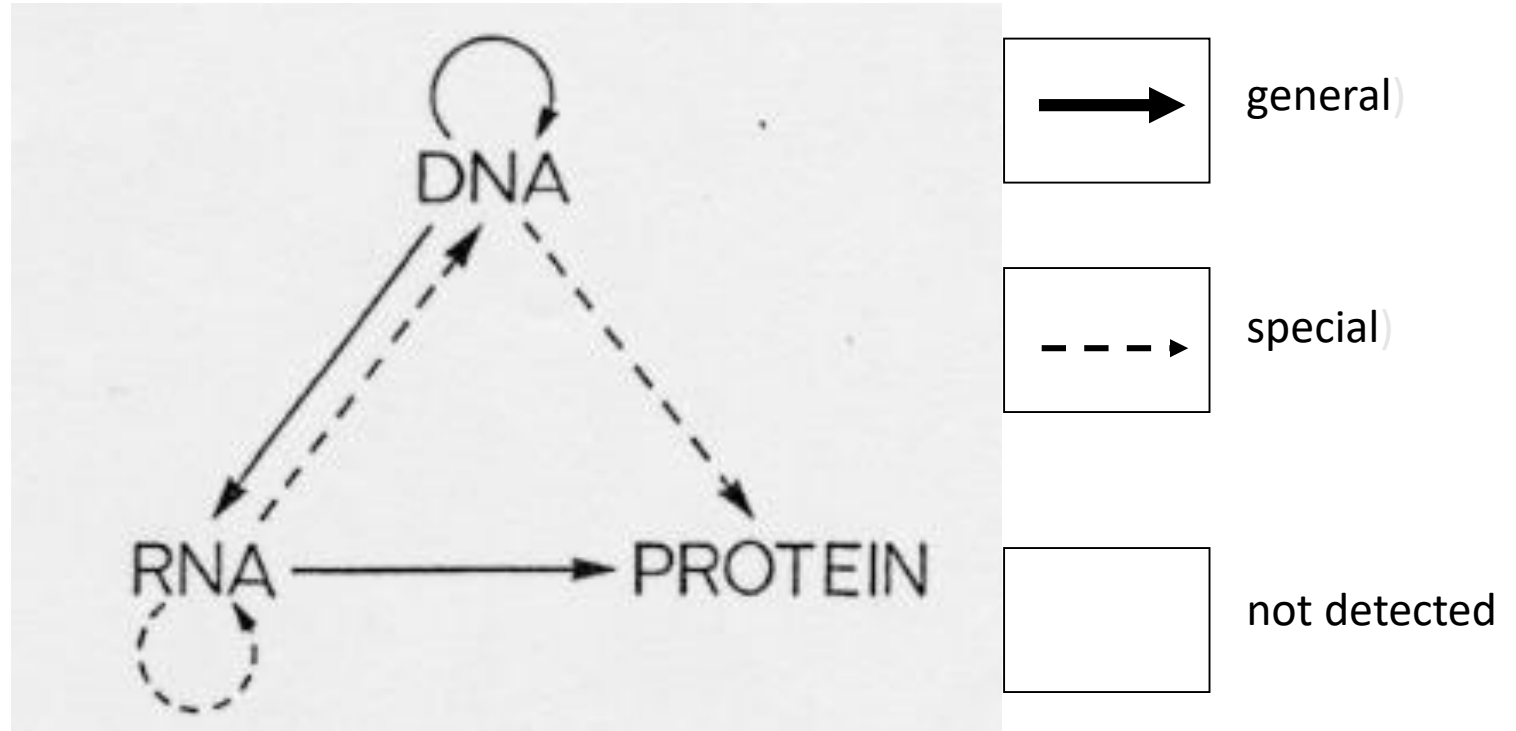


One of the models used by Watson & Crick



The central dogma, Crick 1970



<https://d3njcbhbojbot.cloudfront.net/api/utilities/v1/imageproxy/https://coursera-course-photos.s3.amazonaws.com/0b/641cf0d0d511e597d61389063a70e6/ClassicalPapersGenetics-MOOCs-1200x1200.jpg?auto=format%2Ccompress&dpr=2&w=180&h=>